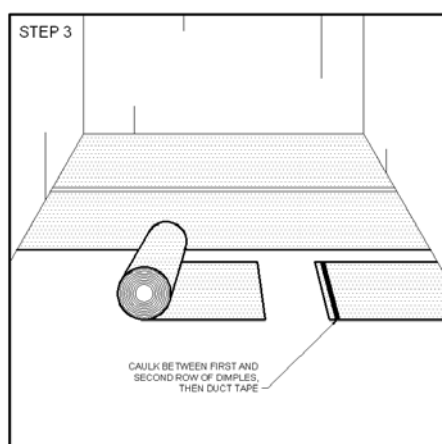
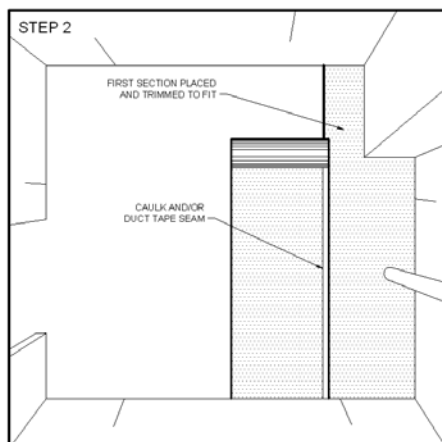
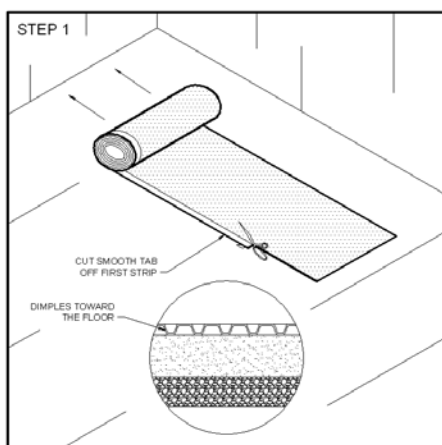
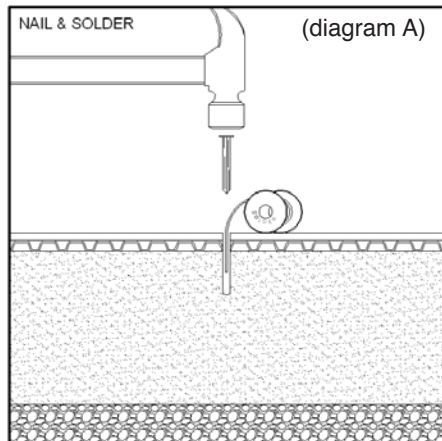
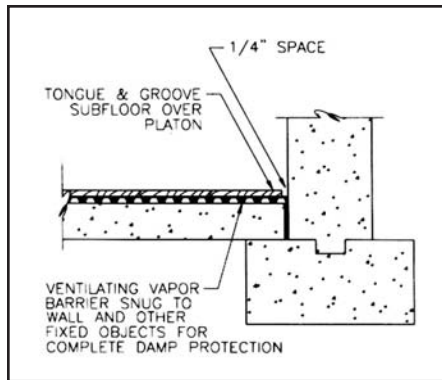


INSTALLATION PROCEDURE



Install your choice of flooring, following the floor manufacturers installation recommendation. Additional instructions specific to Platon subfloor installations are:

Vinyl floor: Glue and staple 1/4" underlay (as recommended by the flooring manufacturer) over the second subfloor: stagger the joints between the underlay and the subfloor.

Hardwood: If the flooring is to be nailed down, used 3/4" OSB and short nails or 2 layers of subflooring (totalling 1" or more) so as not to puncture the Platon.

Laminate flooring: may be installed directly over Platon as a "floating" floor. The concrete floor must be level. Place landscape fabric on the concrete under the Platon (to prevent noise), the laminate manufacturers thin foam underpad over the Platon and then install the laminate. For Commercial use and heavy point loads such as slate billiard tables, install laminate over a minimum 7/16" "secured subfloor" (Landscape fabric is not required under a secured floor)

Carpet: Install over a minimum 7/16" subfloor fastened in a 24" grid pattern.

All information provided herein is intended to be used as a guide only. No recommendations are to be interpreted as superseding or replacing any installation recommendations of the flooring manufacturer. No warranty on the performance of the floor covering is given or implied.

Platon Flooring Protection for floor coverings over concrete.

Platon is a strong, tough 24-mil HDPE membrane with a unique double dimple design that provides exceptional compressive strength with minimum deflection.

By using Platon over concrete, an impermeable vapour barrier and air gap is created. This allows damp concrete to breathe while keeping the floor dry.

Warmer in winter, dry and odor free in humid summer weather, Platon is THE SOLUTION for problems associated with flooring over concrete.

On fresh concrete, you can install flooring as soon as you can walk on the slab!

Floating Floors

In homes, laminate flooring may be placed directly over Platon as a "floating floor" with landscape fabric (used for weed control) under the Platon to prevent noise and thin foam laminate underpad over the Platon.

(Commercial use and heavy point loads such as slate billiard tables, install laminate over a minimum 7/16" "secured subfloor".)

Secured Subfloors

For other floor finishes, plywood or OSB sheets (7/16" minimum thickness) are laid as a subfloor over the Platon and fastened to the concrete floor - 24" grid spacing.

HINT: Fasten with concrete screws or drill a hole the same depth and diameter as a fluted masonry nail (3/16"), insert wire plumbers solder and drive a masonry nail beside the solder at least 1" into the concrete. (diagram A)

1. Remove existing floor coverings.
Ensure the concrete is clear of debris.
Level low areas with floor levelling compound if required.
Cover the concrete with landscape fabric only if the floor is to be "floating"

2. Roll out the first strip of Platon, dimples toward the floor, flat tab away from the wall and cut to length.
Cut off the flat tab.
"Reverse roll" the Platon if it curls excessively.

3. Unroll the next section with the flat tab overlapping the first section and cut to length.
Apply Butyl Rubber caulk or foam panel adhesive between the flat tab and adjacent section and/or duct tape the overlap.
At "end of roll" joints mesh 4 rows of dimples, caulk and tape

4. Cover the Platon with either butt-edge or tongue & groove (T&G) plywood or OSB sheets. (7/16" minimum).
Fasten through the subfloor and Platon 1" into the concrete in a 24" grid and/or where there is vertical movement.
The 4' joints between adjacent 4x8 sheets should be staggered.
Leave 1/4" clearance around the perimeter of the subfloor to allow for expansion.
Non load bearing walls may now be framed on the subfloor.

