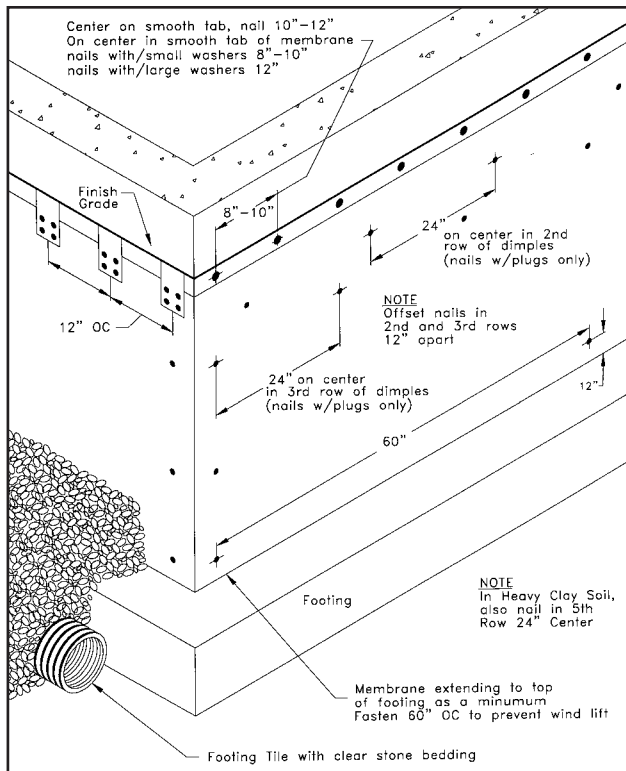
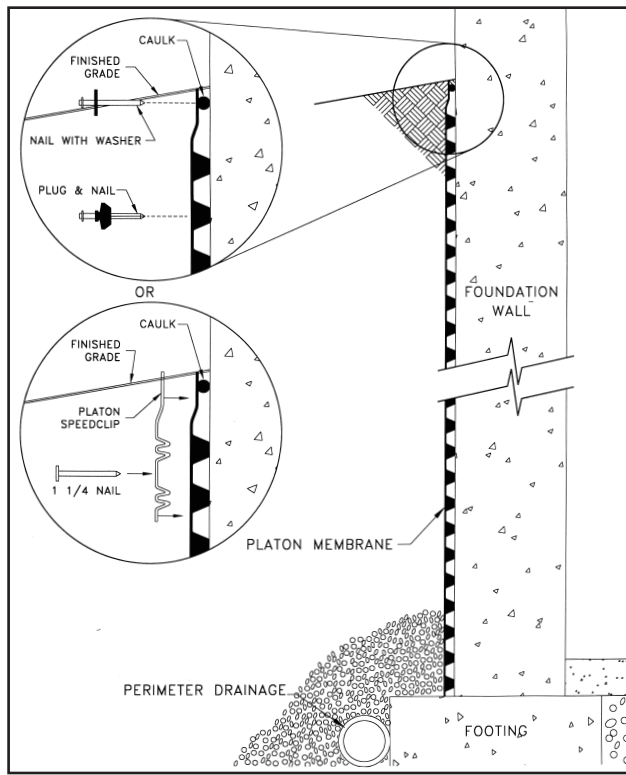
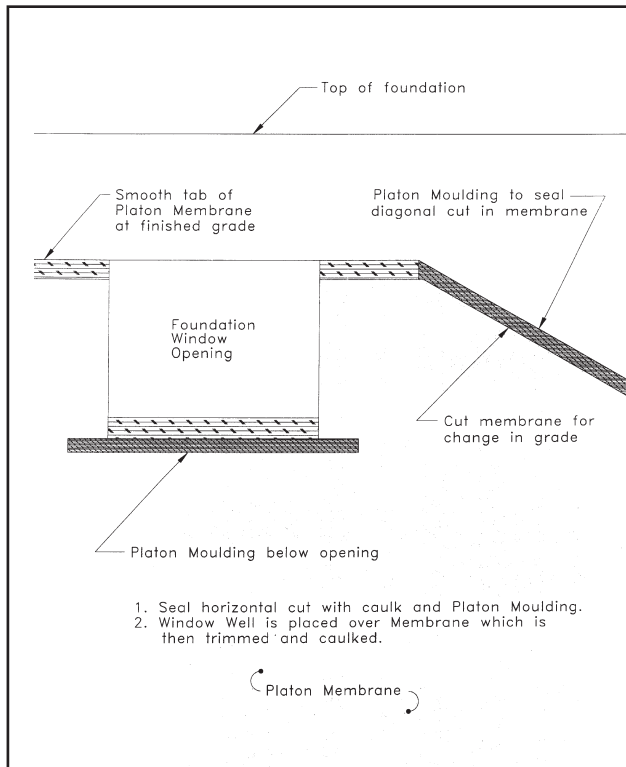


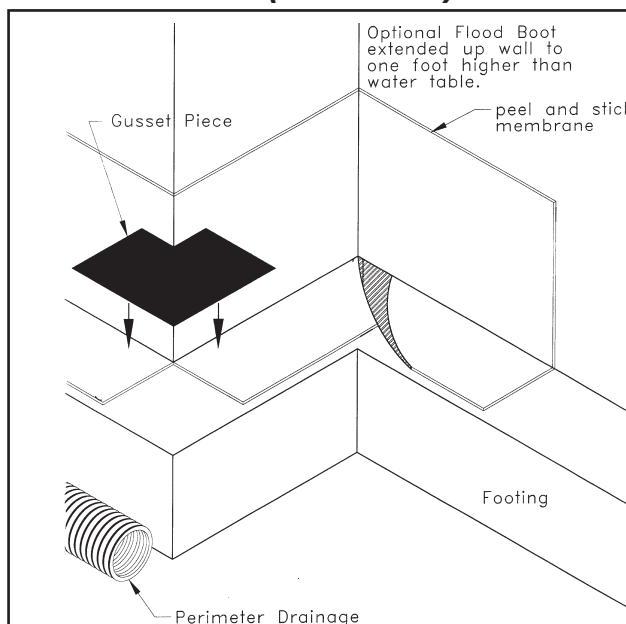
PREPARATION & INSTALLATION



WINDOWS & SLOPED GRADE



FLOOD BOOT (if needed)



For a Dry Healthy Basement

Armtec Limited, 33 Centennial Road, Orangeville, Ontario, L9W 1R1, 1-800-265-7622

INTRODUCTION

Platon Foundation Protector is a unique, dimpled, high density polyethylene membrane, proven to solve basement leakage problems by providing exterior water control, moisture vapor control and drainage (if needed). Platon can be installed on any type of foundation, in any kind of weather and continues to function despite future foundation cracking and settling. Platon wraps around the foundation and is held in place near the top of the membrane so it hangs like a curtain. The flat tab at the top must be tight to the wall to prevent soil entering the air gap and clogging the drainage path. When installed according to the following instructions, Platon installations do not require a dampproofing spray. **It is imperative however, that foundation drainage tile is in place and functioning properly to ensure that water and moisture drained by Platon can be removed.**

WHAT YOU NEED

1. Platon Membrane

- 1 roll for every 62 lineal feet of foundation

2. Platon Moulding (to prevent dirt from entering any cut edges)

- At least 4 strips/job PLUS 1 strip per window well.

Fastening Method - Use either Speedclips (3A) or Platon Plugs and Washers (3B)

3A. Platon Speedclips

- 65 Speedclips per roll of membrane (Speedclips secure the membrane AND press the smooth tab tight to the wall.)

OR

3B. Platon Plugs

- 1 bag (250 plugs) per 3 rolls of membrane **AND** (to seal the smooth tab to the wall)

Platon Washers - 1 bag (65 washers) per roll OR **Platon Moulding** (10 strips per roll)

4. Caulking

- Minimum 2 tubes per roll

- For CONCRETE or WOOD, use Butyl rubber or asphalt based "Roof and Gutter Caulk"

- For ICF'S, use waterproof foam panel adhesive EG. PL 300 or Liquid Nails Foam Adhesive.

DO NOT USE SILICONE, LATEX OR POLYURETHANE (DOES NOT ADHERE WHEN CURED)

5. Fasteners

- For CONCRETE, use 1-1/4" concrete nails

- Power nailer for block or poured walls

- green uncured concrete can be hand nailed

- For ICF's or wood foundations use 1-1/2" drywall or deck screws.

INSTALLATION

1. Break off all ties and projections on the wall and clear stone and debris from the footing. Seal tie rod holes with mastic. Flat ties do not need to be sealed and Block and ICF walls do not need any surface preparation.

2. Position and snap a chalk line around the entire foundation to indicate finished grade.

3. Apply a generous bead of caulking one inch below the chalk line.

4. Working from left to right, roll out the membrane along the foundation, **dimples toward the wall, smooth tab at the top**, following the chalk line. Keep the smooth tab tight to the wall.

NOTE: The Platon membrane must wrap the foundation from a point directly touching the top of the footing up to finished grade or ground level. If the height of the roll permits, Platon can be creased sharply at the foundation/footing joint and brought out over the footing.

5. Fasten with Speedclips along the top of the membrane 8" to 12" O.C. The Speedclip dimples mesh with the top 2 rows of Platon dimples and the Speedclip offset presses the smooth tab tight to the wall. Nail (or screw on ICF's) through the small hole marked "Nail Here". **ALTERNATIVELY** Fasten with Platon plugs and nails in the 2nd and 3rd row of dimples, 8" to 12" spacing. Secure the smooth tab with nails and Platon washers every 8 to 12" OR use Platon Moulding strips along the top of the tab. **NOTE: CLAY soil requires additional plugs in the 5th row of dimples. (Not required with Speedclips)**

Corners

Bend and crease the membrane to provide the best fit. If extending Platon over the footing, make a small cut at the bottom, right at the corner, to facilitate a good fit.

Joints

For vertical joints between rolls, overlap a minimum of 20". (Any water that gets into the joint will flow to the footing drain.) Horizontal joints, if required, should be overlapped 5 dimples (6"), with the upper course over the lower one. Platon may be used to a burial depth of 15 feet. Please contact Armtec Limited if you have a deeper foundation.

Windows

Cut the Platon membrane flush with the sides and 3" lower than the window opening. If using Speedclips, move the cut out piece down to seal the open horizontal cut, mesh the dimples and fasten with Speedclips. If using Platon Plugs, continue the nailing pattern below the window opening and seal the open horizontal cut with Platon Moulding. The window well is installed over the membrane, which can then be trimmed and caulked.

Sloped Grades

For a gradual slope, measure the grade change chalk line length, add 20" for joint overlap and cut that length of Platon membrane. Install with the smooth tab following the chalk line, fasten with Speedclips or Plugs and Washers and trim along the edge of the footing. For a steep slope, cut the membrane to match finished grade and seal the open edge with caulk and Platon Moulding. (Tip - Install Platon on the lowest elevation first, then the sloped grade, then the higher elevations.)

Backfilling

Backfilling should be done in accordance with local Building Codes and extend over the footing against the base of the Platon membrane.

Repair and Pipe projections

Caulk around the tear, cut a piece of surplus membrane 12" larger than the tear to be repaired, place over the tear, mesh the dimples and fasten with Platon Plugs. Pipe Sleeves - Cut a hole the size of the sleeve. Caulk after the pipe has been installed. Protruding pipes - Cut the membrane vertically, then around the pipe. Apply a 24" wide patch over the cut and fasten with Platon Plugs. Caulk around the pipe to keep soil out of the air gap.

Flood Boot

If the water table is expected to rise above the footing, or if the drain tile can not take away the water drained by the Platon membrane, a "peel and stick" rubber flood boot can be installed. It extends over the footing and up the wall to a point 12" above the anticipated water level and is placed before installing the Platon membrane. Follow the Peel and Stick manufacturers instructions.

NOTE - No matter what kind of waterproofing is used, high water table conditions that overwhelm the footing drain will cause the floor to leak or heave. A shallow foundation or multiple footing drains and pumps are recommended in problem areas.